



OPTIMIZED PACKING SOLUTIONS



INTRODUCTION

At OPS, we consider the packing is **the starting point for securing goods** in the supply chain.

A good packing is crucial, but the entire transport chain must also be based on **on competent and reliable service providers.**

Our mission as experts is to find the most appropriate solution and assist you in your transport or storage projects, **with the protection of your goods as a guideline.**

OPS is your ideal partner for :

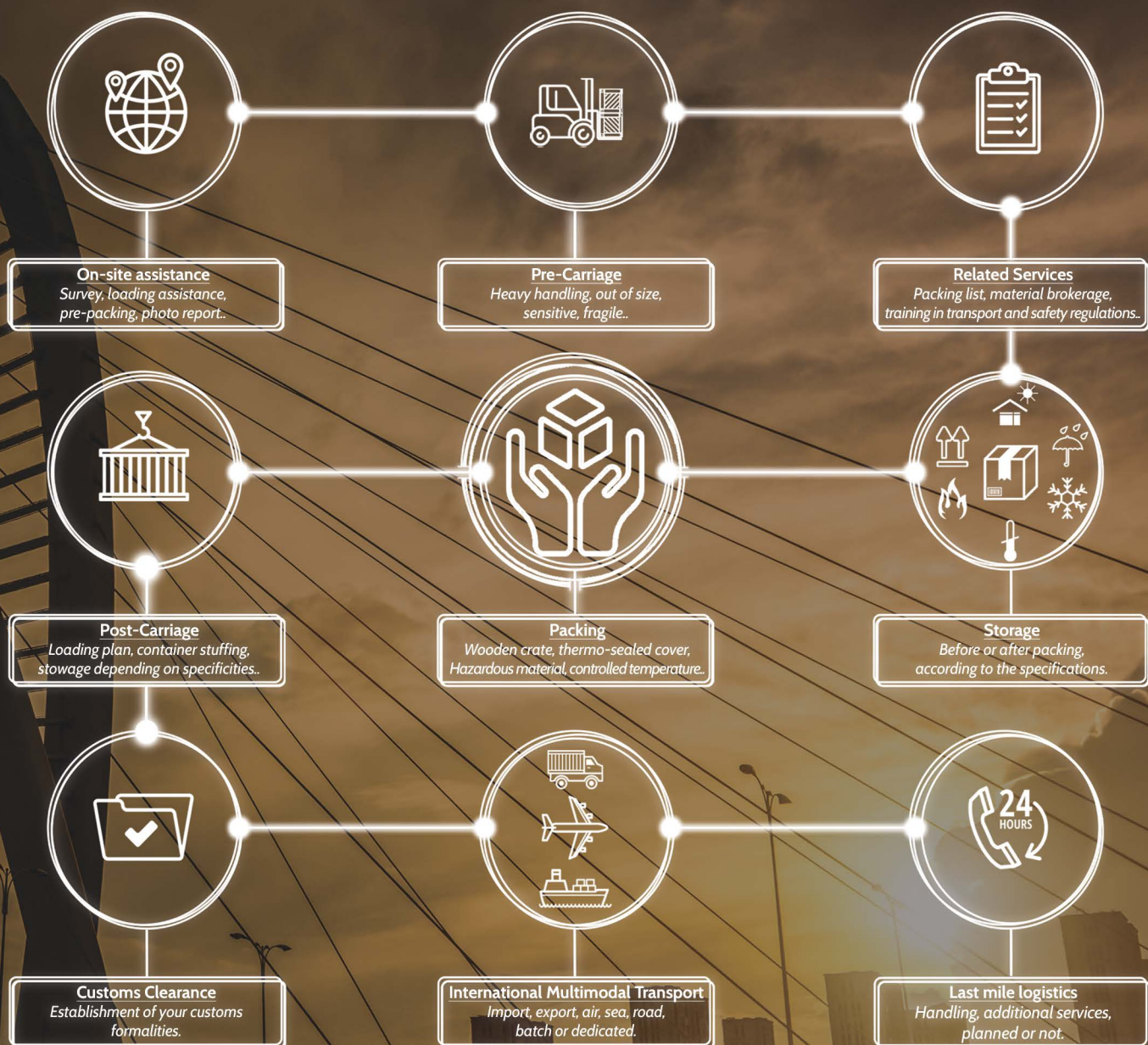
- **Expertise** in many disciplines and regulations related to the packing applications.
- **Advice** on your shipments involving packing issues or associated themes,
- **Project Management** using a large network of specialized and and recognized professionals in France and abroad.

Through this network of professionals and a complete vision of the project, we are able to offer :

- **Reduced and respected deadlines,**
- **Optimized rates** through our network,
- **Less environmental impact.**

If your goal is to reduce costs, pack in a rush or reduce your carbon footprint, **OPS have the solution.**

SERVICES



SOLUTIONS DESIGNED TO PRESERVE THE ENVIRONMENT

The transport and logistics industry represents a significant part of the **world's CO2 emissions**. Aware of the issue and the consequences, many supply chain actors have already started to develop and propose solutions to reduce the carbon footprint of the goods and services they offer.

Whether it is concrete applications of **CSR policies** in company installations, optimization of fleet of truck, ships or airplanes that consume less fuel, use to consume less or use less polluting fuels; Using packing materials that are **produce or manufactured locally** and with environmentally friendly techniques; **Every gesture counts to reduce the carbon footprint of a project.**

At OPS, we integrate and promote **the most eco-efficient solutions**, giving preference to service providers sharing the same philosophy, in order to reduce the global carbon footprint of your project as much as possible. If you don't do it for yourself, do it for your children or the polar bears, Goddammit!

The development of such solutions is based on several criteria:

- **The existence of CSR procedures within the service providers involved in the projects,**
- **Recognized calculation methods in the different sectors and modes of transport,**
- **Optimization of the global balance sheet, through several studies and comparative solutions.**



THEY ALREADY TRUST US



CONTACT



■ +33(0) 6 30 85 13 78



■ welcome@opsfrance.com



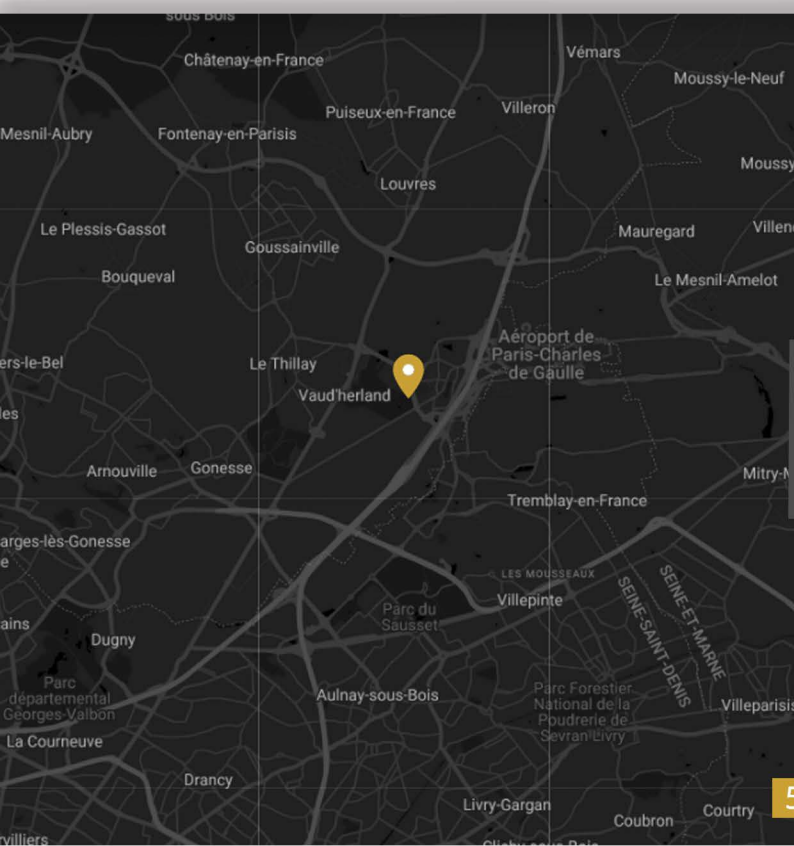
■ www.optimized-packing-solutions.com



■ 5 rue de la Croix - Z.A du Moulin 95700
ROISSY-EN-FRANCE - FRANCE



■ linkedin.com/company/ops-optimized-packing-solutions



Pascal RAGARU
PDG / CEO

